



## DIRECTIONS

On the next several pages you will get to design your shirt, pick your preferred tag location, and decide what you want your tag to say.

To start the design process fill in the information below.

## CONTACT INFORMATION

---

Last Name

First Name

---

E-mail (for billing and further questions)

---

Phone (optional)

## SHIPPING INFORMATION

---

Last Name

First Name

---

Street Address

---

City

State

Zip Code

## SHIRT CHOICE

---

Shirt Style / Name

---

Size

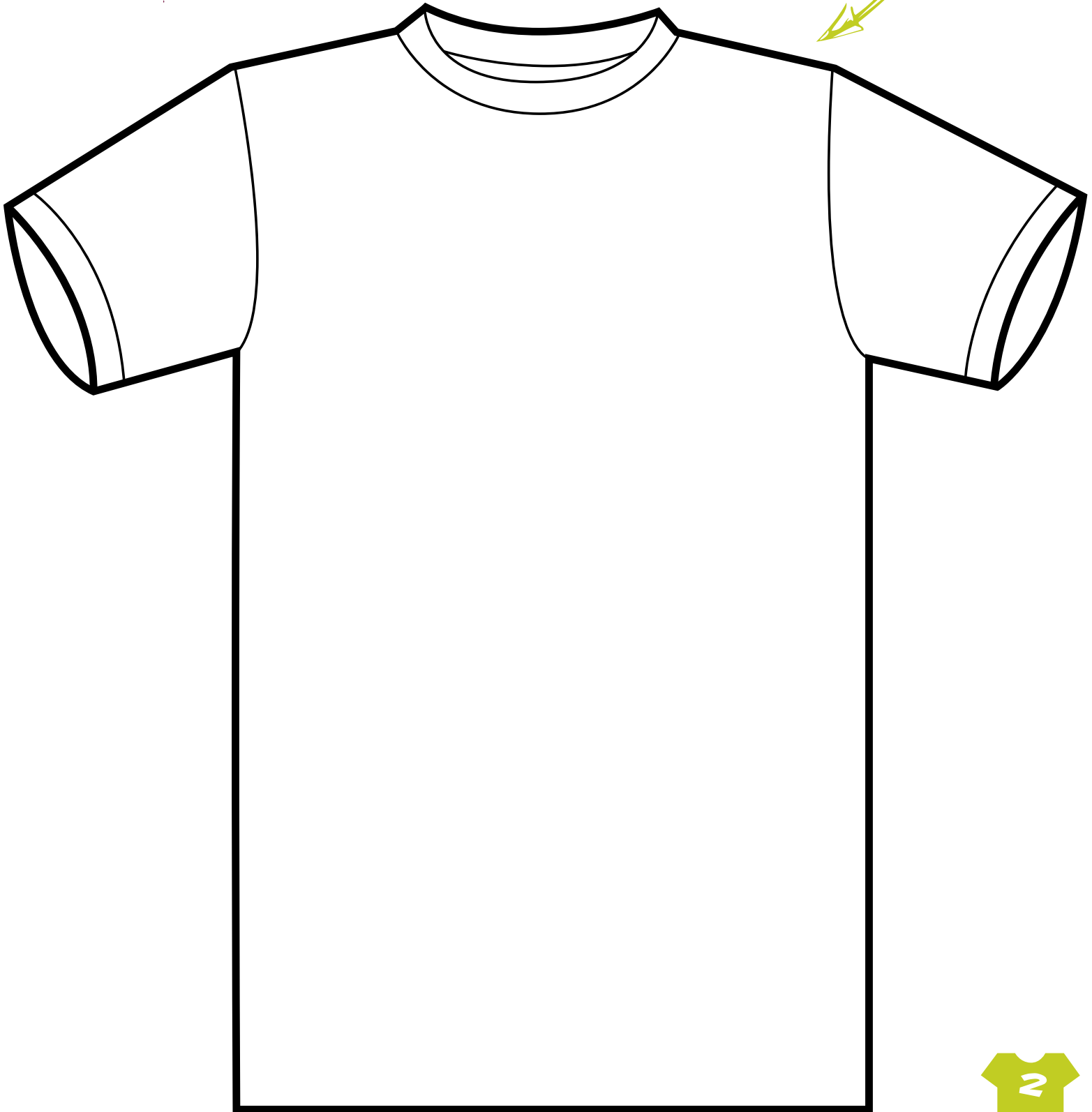
Color



# design your own clothes

## DIRECTIONS

Use this shirt template to sketch your design idea. If you need extra room, feel free to use another blank sheet of paper, but make sure to include all the necessary forms when you send us your ideas.





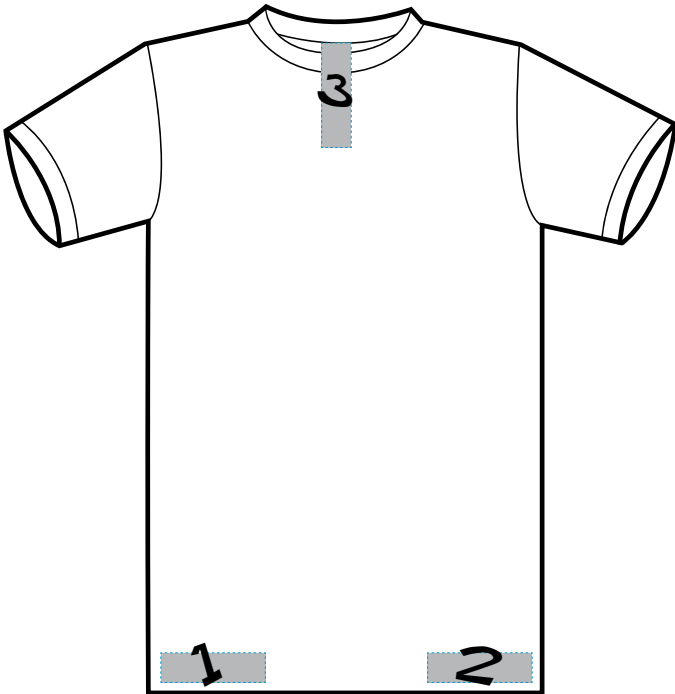
## DIRECTIONS

Pick one of the five tag locations shown below, or indicate it you don't wish to have a custom tag sewn on your shirt.

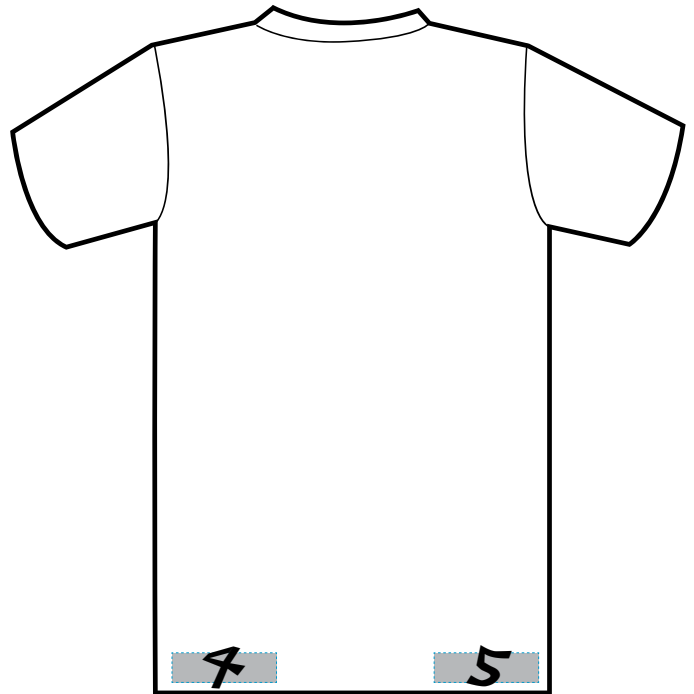
☐ Yes, I would like a tag,

**Tag Position #** \_\_\_\_\_

☐ No, I would not like a tag



1. Front right lower corner
2. Front left lower corner
3. At neckline, inside shirt



4. Back left lower corner
5. Back right lower corner

## DIRECTIONS

If you indicated that you would like a tag, fill in what you would like your tag to say.

### SAMPLE TAG



Design by

Your Name

### YOUR TAG



Design by

\_\_\_\_\_

Fill in your name here!





## **DIRECTIONS**

Now that you're done making your selections, please send these forms back to us so that we can get started on your design!

**If you'd prefer to send your designs in via mail, send them to:**

**NUWAKA FASHION WORLD  
732 VESTAL PARKWAY  
SUITE 2  
VESTAL, NY 13850**

**You can also e-mail us your designs at:**

**[design@nuwaka.com](mailto:design@nuwaka.com)**

**If you have any further questions you can reach us:**

**(607) 205-1133**

**We look forward to seeing all your cool designs!**

